



Smart routes and intelligent traffic - for you

Finnish Transport Agency (FTA)

5.8.2017



We contribute to the development of Finland's transport system

We are responsible for **the Finnish roads, railways and waterways** and the comprehensive development of the **transport system**.

We promote **traffic safety** and the balanced and sustainable development of the regions.

We enable smooth, efficient and safe **travel and transport**.

We are a multidisciplinary **expert organisation** specialising in transport, and operating under the jurisdiction of the Ministry of Transport and Communications



The strategy and values direct our activities

Vision: Smart routes and intelligent traffic - for you

Mission: We enable smooth, efficient and safe travel and transport

- Strategic goals:
 - Services based on a well-functioning and safe infrastructure
 - Reliable digital services and greater operational efficiency
 - Renewed ecosystem for mobility and transport
 - Skilled professionals and an innovative organisational culture
- Our values:
 - Boldly professional
 - Achieving results together
 - For the common good



Infrastructure provides a platform for growth

€ Infrastructure assets
20 billion €

€ Current spending on ongoing projects
2.6 billion €

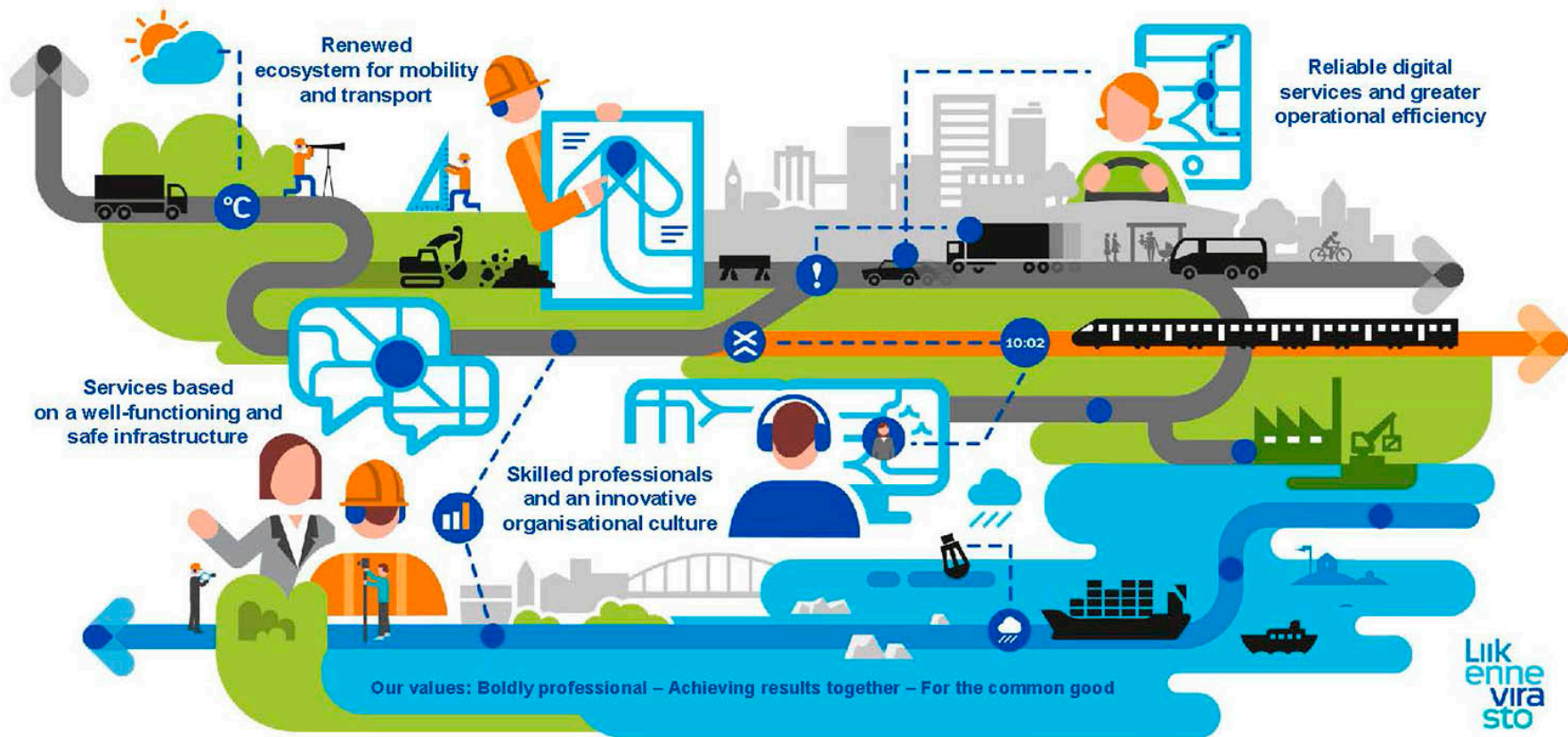
€ FTA's share of the total infrastructure market
1/5

€ Annual budget approximately
2.1 billion €

FTA personnel, permanent
620
experts

Number of people the FTA employs indirectly through projects
12,000

Smart routes and intelligent traffic - for you





Railway statistics

2,463
level crossings and
44
tunnels on the
main lines

Annual rail freight
volume
33
million tonnes

Length of the
Finnish railway
network

5,900
kilometres,
of which
90 %
on single track

Number of
annual train
journeys
76
million



Road statistics

Motorways, approx.

880 km

Pedestrian and
bicycle lanes

5,320 km

Bridges

15,000

Finland has
approx.

78,000
km of highway

270

million tonnes of
goods carried by
lorries annually

Passenger transport
amounts to

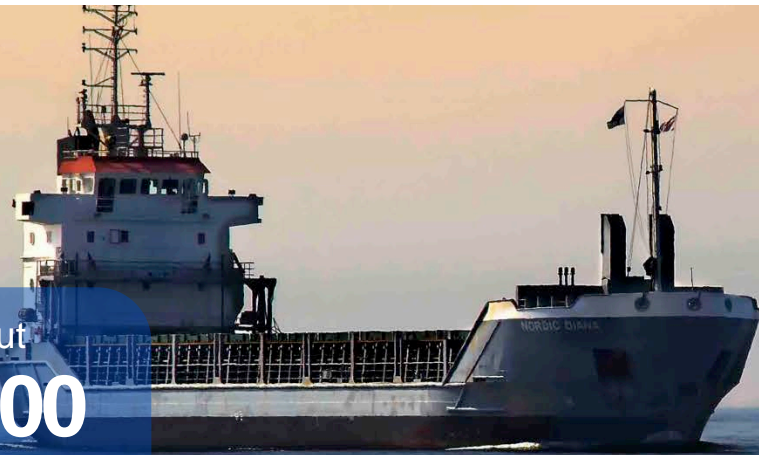
95 %
and freight transport to

69 %
of all road transports



Maritime statistics

About
8,300
km of coastal
fairways and
8,000
km of inland
fairways



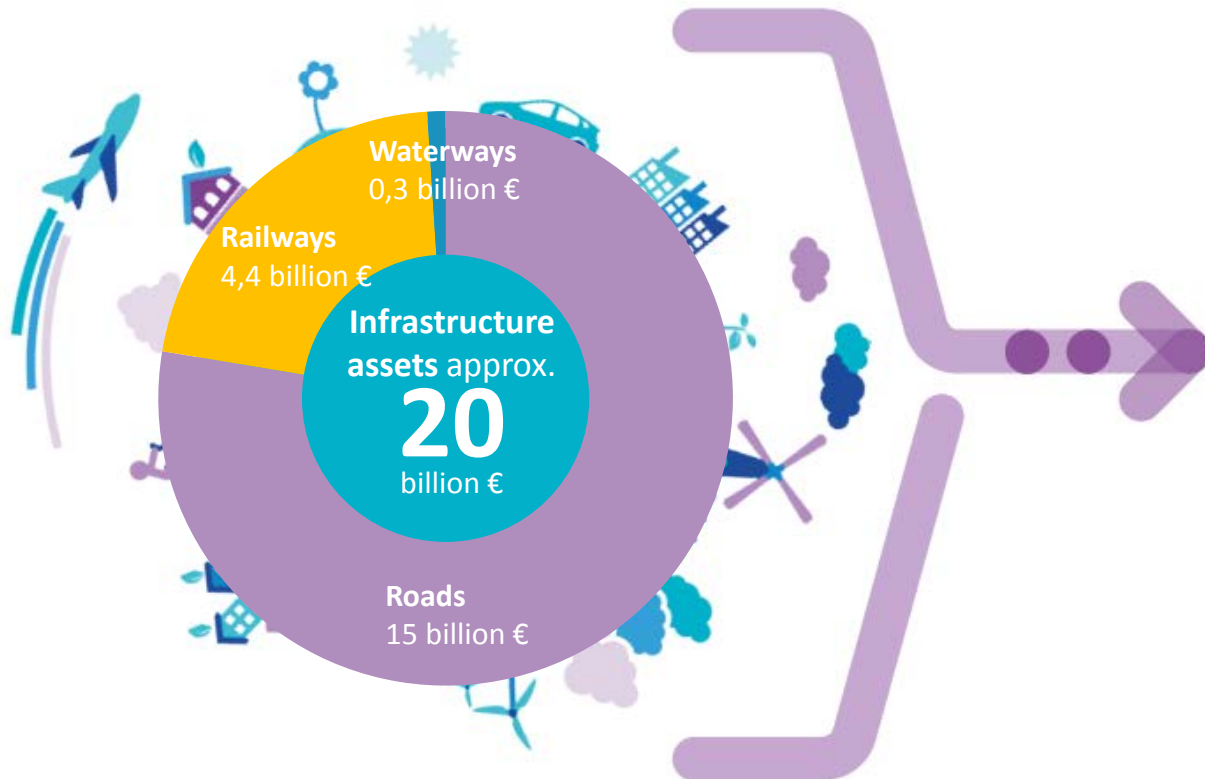
Finland has
26
ports kept open all
year. About
80 %
of the freight traffic
is handled by 10
ports.

25,600
aids to navigation
(lighthouses,
buoys and spar
buoys) in the
fairways

Total length of
merchant shipping
lanes in Finland
4,000
km



Transport infrastructure assets in 2016 approx. 20 billion €



- The estimated **replacement value** of the transport network exceeds 50 billion €.
- The **maintenance backlog** amounts to about 2.5 billion €.
- A transport network in satisfactory state can also contain sections in poor condition
 - The actual need for repair is approx. 1 billion €.
 - This would require additional financing of approx. 100 million € annually.



Thank you!

www.liikennevirasto.fi/web/en

www.facebook.com/liikennevirasto

www.twitter.com/liikennevirasto

